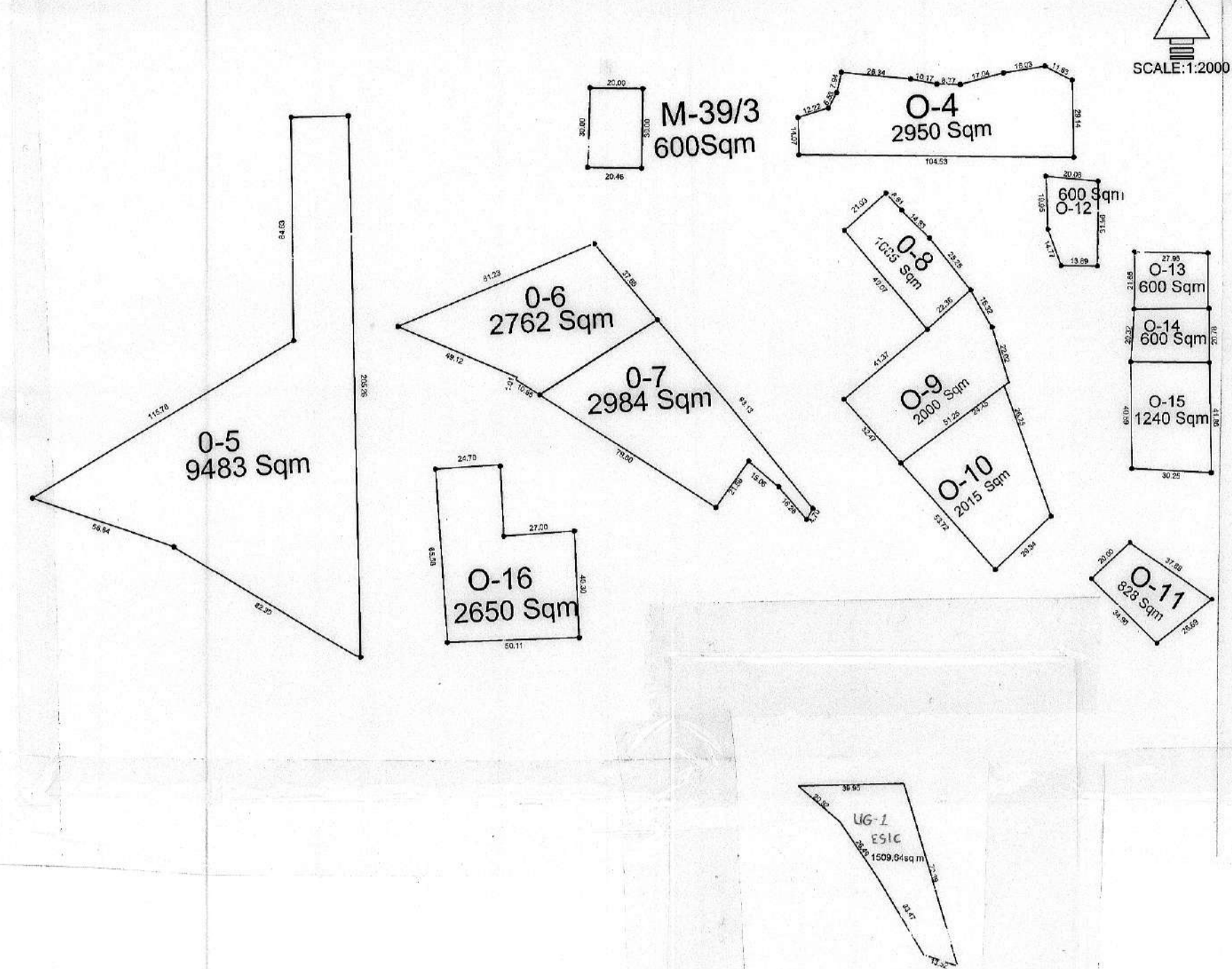


DETAILS OF NEWLY CREATED PLOTS



Area Statement

Total area of Phase I & II	15,99,182.00 m ²
Total area of Roads including area of Road widening of National Highway	2,76,744.00 m ² (Approx)
Total area under open space	2,54,000.00 m ² (Existing)
Total area under plots	10,68,438.00 m ² (Existing)
Area of plots in open space proposed	31,906.00 m ²
Remaining area of open space after Creation of plots (13.88 %)	2,22,094.00 m ²

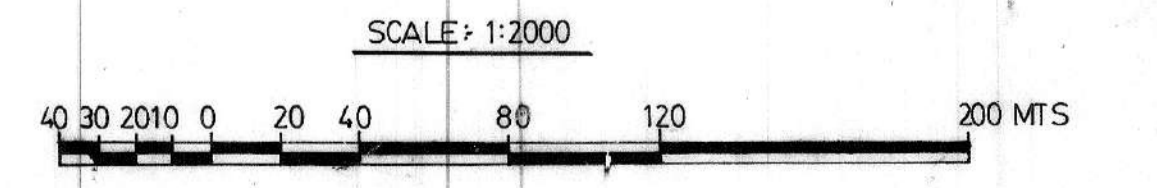
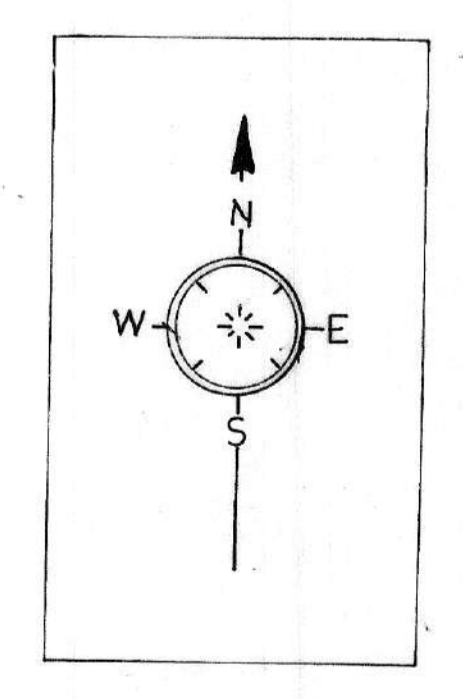
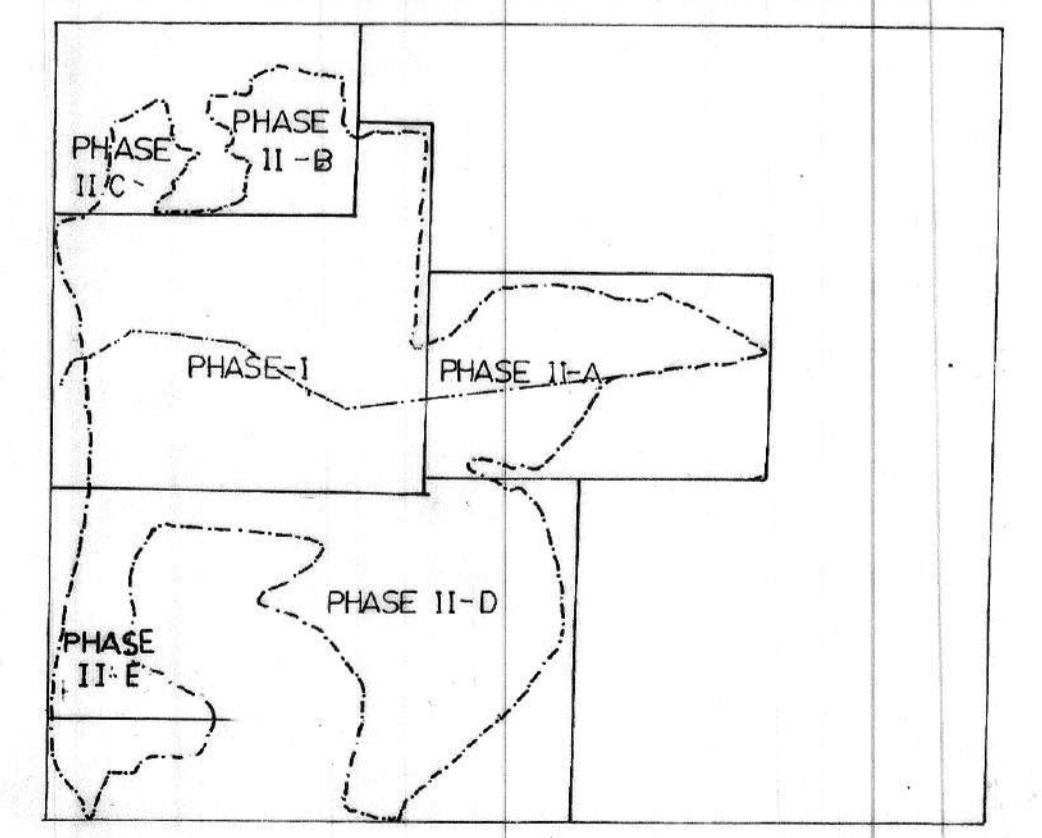
INDEX

- NALLAH
- CONTOUR LINE (IN MTS)
- PLOT BOUNDARY LINE
- TALUKA BOUNDARY LINE
- HIGH TENSION LINE
- CULVERT
- DRAINAGE LINE WITH GUTTERS
- VILLAGE TALUKA BOUNDARY LINE
- GUIDE MAP
- WATER RESERVOIR
- LAND SCAPING AREA
- PARKING AREA

NOTES

ALL DIMENSIONS ARE IN METERS.
 THE AREAS MENTIONED IS IN Sq.Ms.
 CONTOURS OF 5Mts INTERVAL ARE SHOWN IN UNDLATING AREA ONLY
 BOUNDARIES ARE BASED ON CONTOUR MAP SUPPLIED BY G.D.D.I.C.
 THE SUB-DIV OF PLAN OF PHASE I WAS DONE BY P.M. CONSULTANT
 ENTRY TO G.D.D.I.C. OFFICE FROM NH SHALL BE CLOSED.
 FOR AREA AND DIMENSIONS REFER DETAIL PART PLANS OF 1:1000 SCALE

SHEET INDEX



TOWN & COUNTRY PLANNING DEPARTMENT
 GOVT. OF GOA MORMUGAO TALUKA
 VASCO DA GAMA GOA.

DATE: _____

BHALDANDRA S. OLKAR (DRAFT BY: (B.U.D. INSR))	M. S. RAWOL (CHECKED BY: (P.A. ASST))	S. V. SANGANAL (SENIOR TOWN PLANNER)
--	--	---

S. I. PUTTARA JI
 (ASSOCIATE TOWN PLANNER)
 (MORMUGAO TALUKA)

VERNA ELECTRONICS CITY - PHASE I & II (A,B,C,D,E)

33x118 Gms